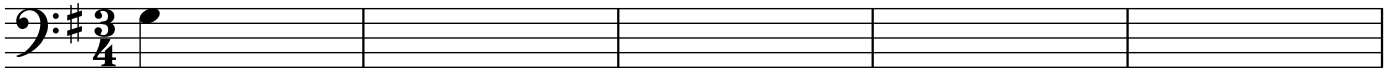
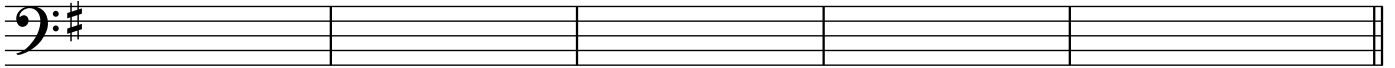


MUSIC 154 online dictation #9 2015

A Melody: write the cello line that begins one full measure after the fade-in

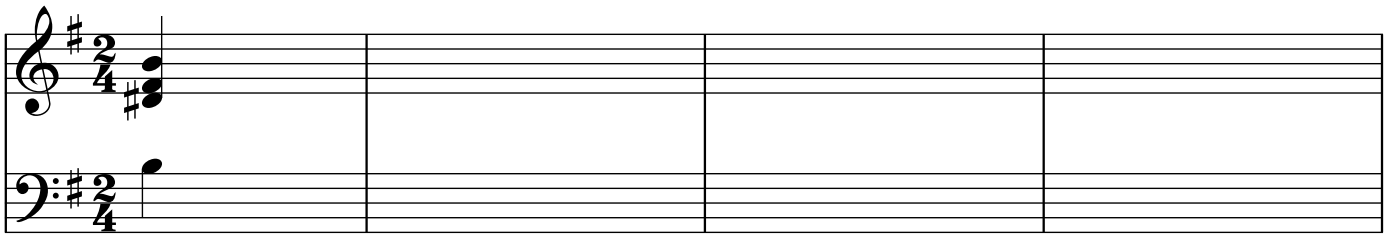


6



What **key area** is tonicized in bars 6-8?

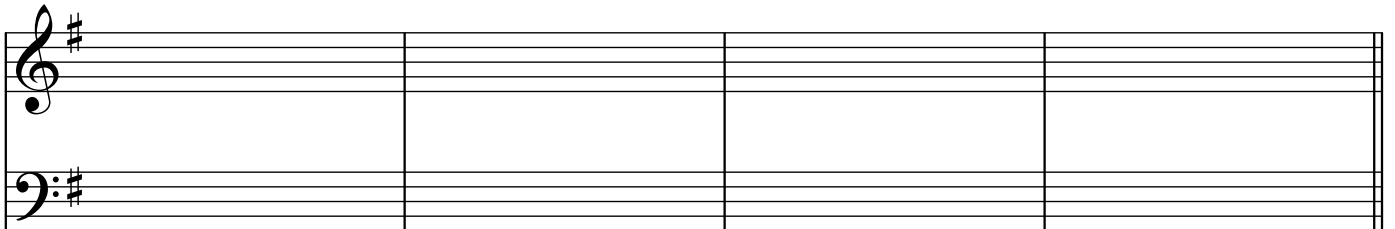
B Harmony: Write soprano, bass, and roman numeral with inversion (one chord per beat).
A secondary key area is tonicized in bars 3-4: write this as a brief common-chord modulation,
analyzing the first beat of m.3 as a pivot chord in both keys.
For **extra credit**, write the inner voices as well



Em: V

G:

5



Em: