

Complete the following table.

solfège syllable	solfège abbreviation	scale degree number	scale degree name
do	d	1̂	tonic

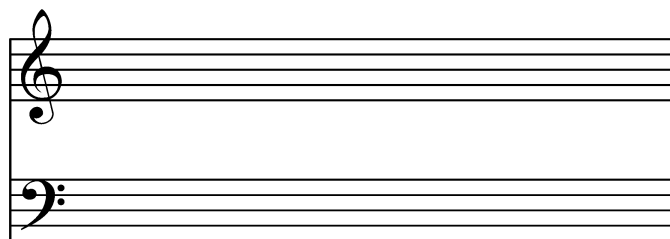
“Translate” the following from solfège syllables to scale-degree numbers. Always write the little hat above every scale-degree number!

p m f s f m r d _____ d r m s m r m _____

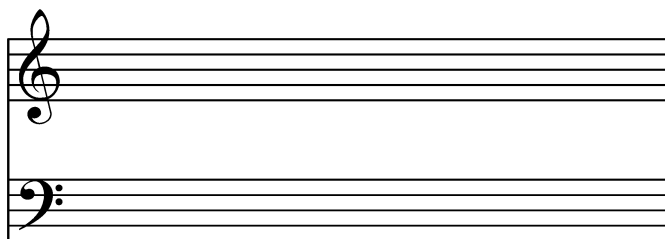
p d' t l s f m r d _____ d m s d' t l s _____

Write out the following major scales, in **both treble and bass** clef, **ascending only**. Use **individual accidentals** for each note as needed—not a key signature. Include the **solfège syllables** and **scale-degree numbers**. **Mark the half-steps** and determine the appropriate accidentals. Remember to write the accidentals neatly and the appropriate size. Mind the **duration value** asked for, to get practice writing different values. Mind the **stem direction** as well.

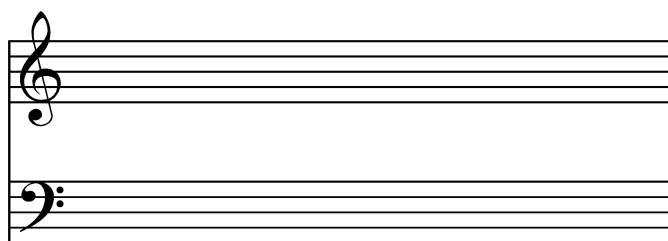
G major, in quarter notes



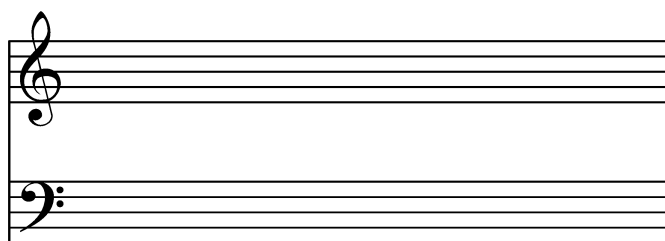
D major, in half notes



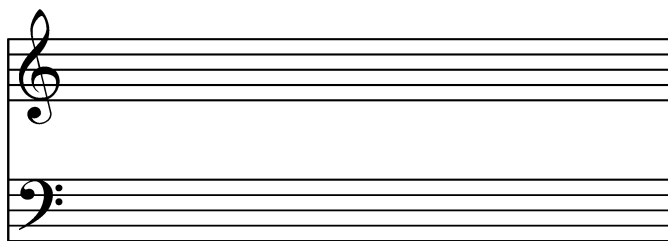
A major, in eighth notes



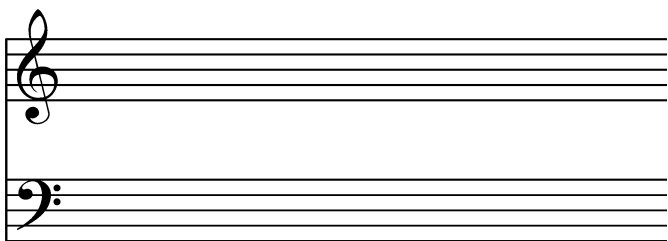
E major, in whole notes



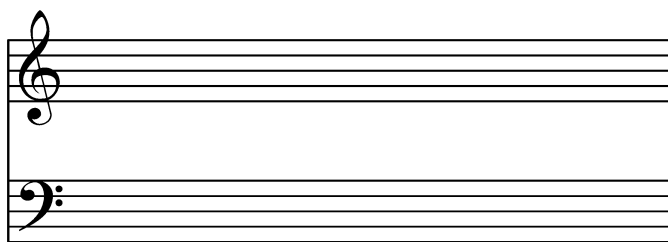
B major, in quarter notes



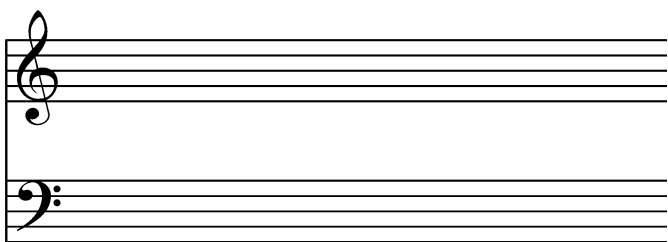
F# major, in half notes



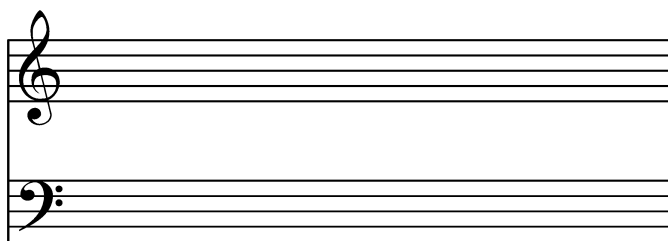
C# major, in eighth notes



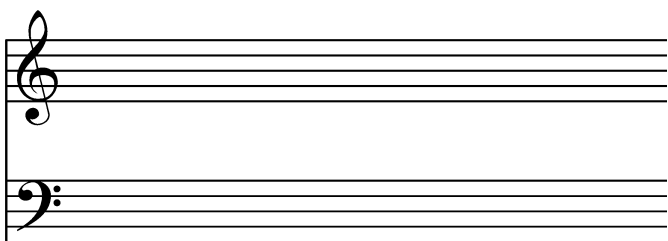
E major, in whole notes



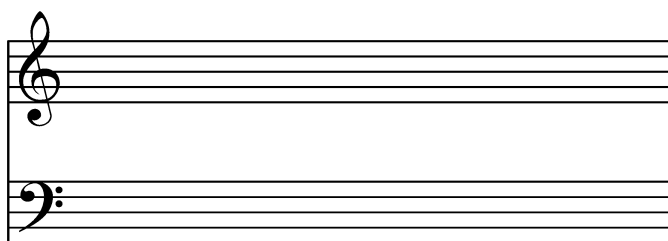
F major, in quarter notes



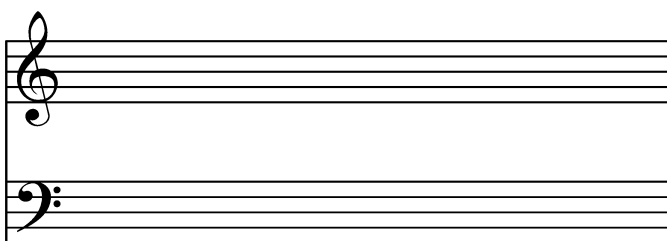
Bb major, in sixteenth notes



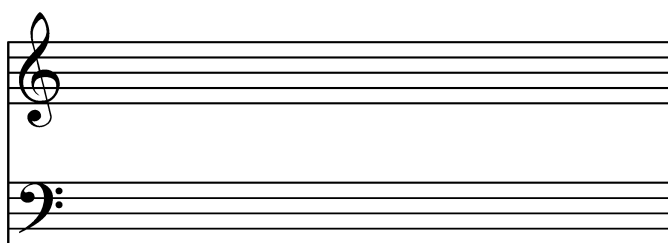
Ab major, in eighth notes



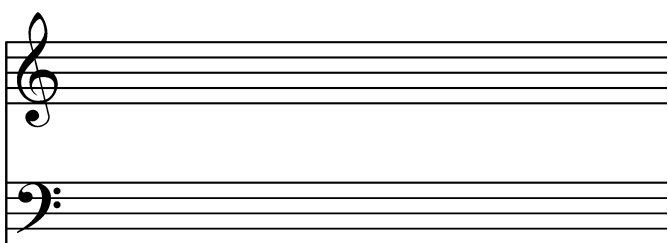
Ab major, in whole notes



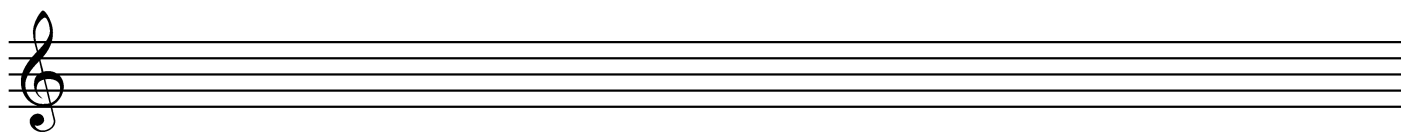
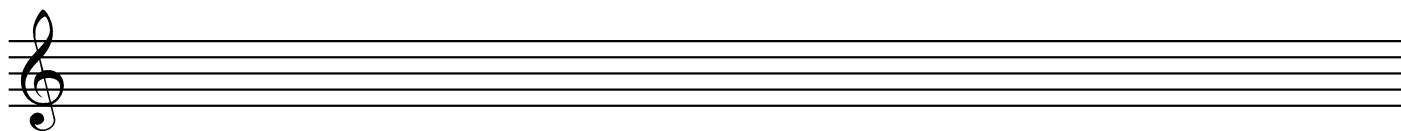
Db major, in eighth notes



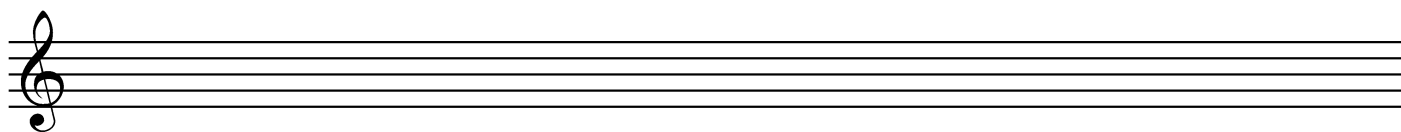
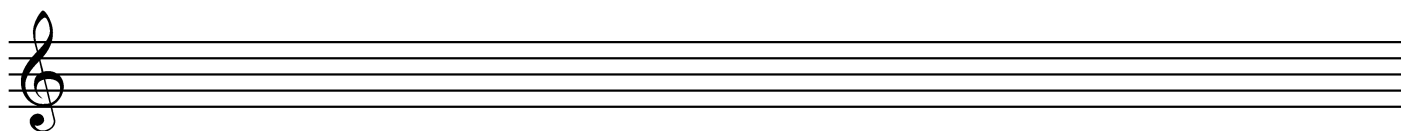
Gb major, in half notes



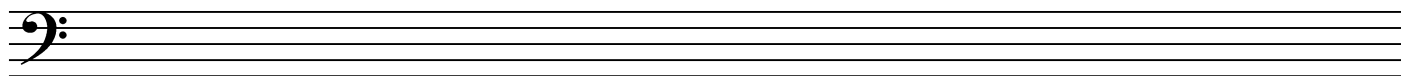
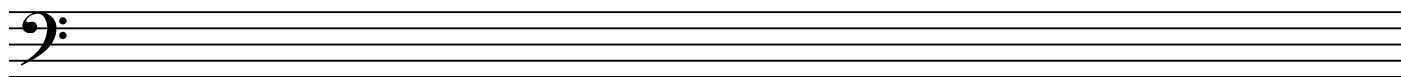
Write “Alleluia” beginning on F. Include time signature, bar lines, solfège syllables, and all necessary accidentals. Do **not** write a key signature; write individual accidentals instead.



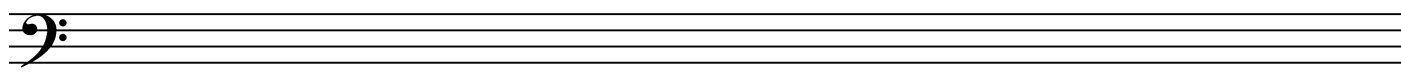
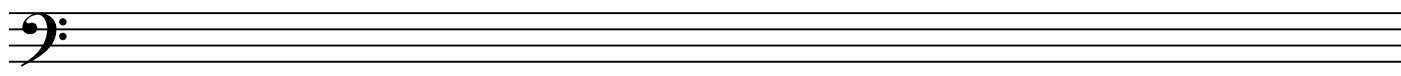
Write “Alleluia” as above, but beginning on E.



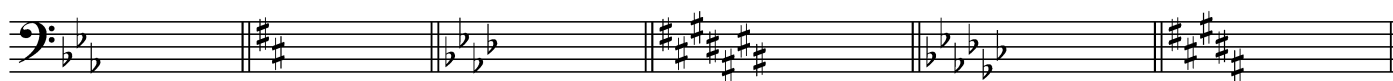
Write “Alleluia” beginning on B-flat, with all the elements as above, in **bass** clef.



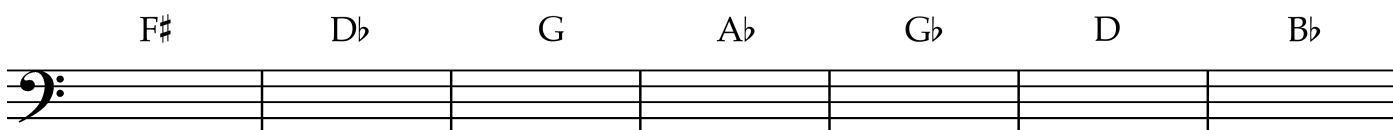
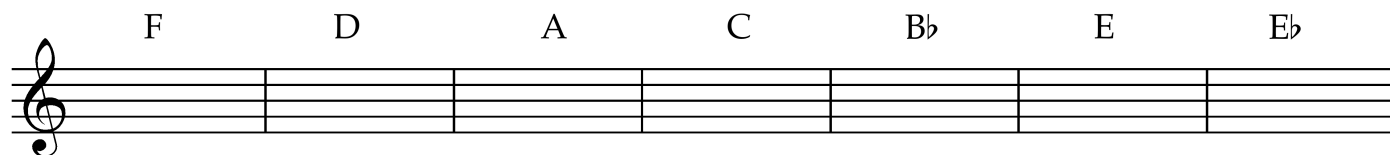
As above, but beginning on A.



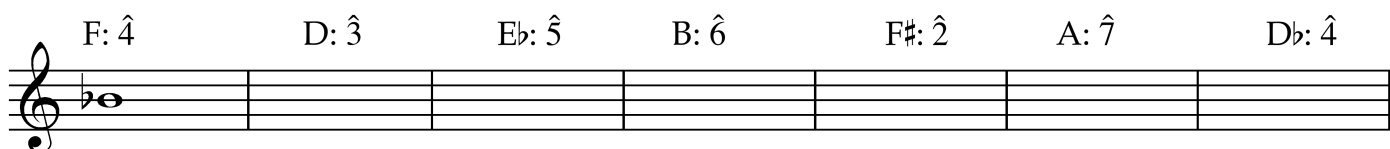
Identify these major key signatures; mind the **clef**.



Write the indicated major key signatures. Mind the **clefs**.

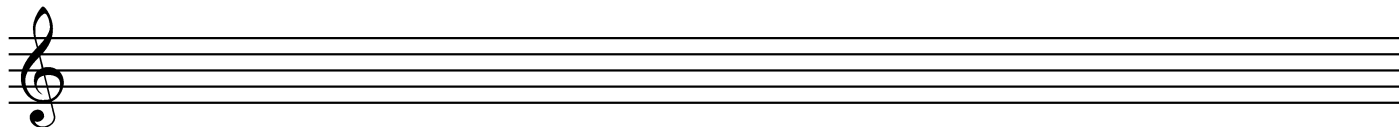
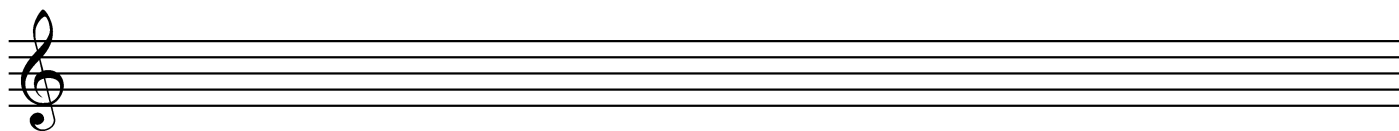


Write the scale degree requested in the indicated key, including accidental if needed, and write the scale-degree name below.

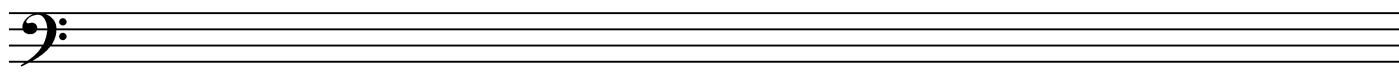
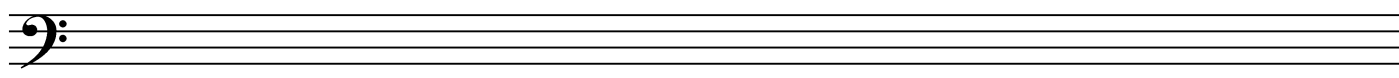


subdominant

Write “Alleluia” in the key of E, this time using the appropriate **key signature**. Include time signature, bar lines, and solfège syllables.



Write “Alleluia” in the key of B-flat, with key signature and with all the elements as above, in **bass** clef.

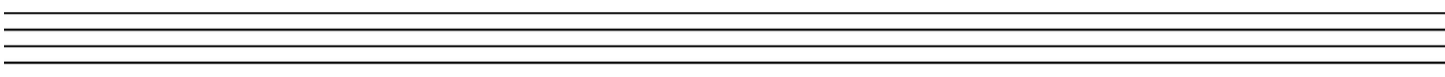
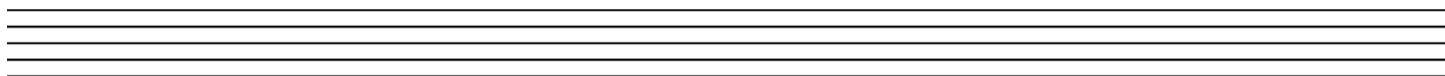


Here is “Liza Jane” in the key of D major:

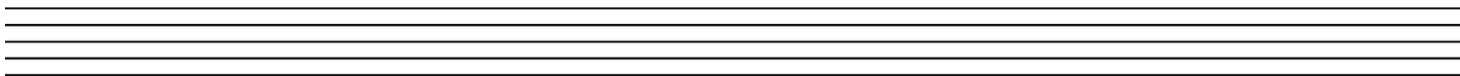
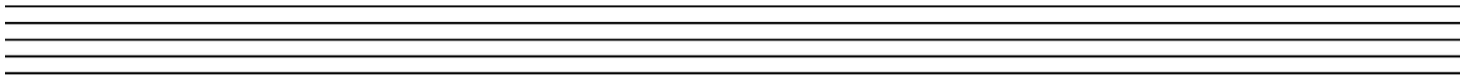
I know a girl who you don't know, li'l Li - za Jane! Way down south in Bal-ti-more, li'l Li-za Jane!

Oh, E - li - za, li'l Li - za Jane! Oh, E - li - za, li'l Li - za Jane!

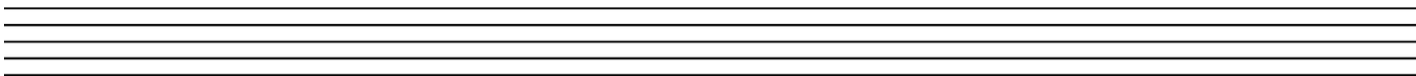
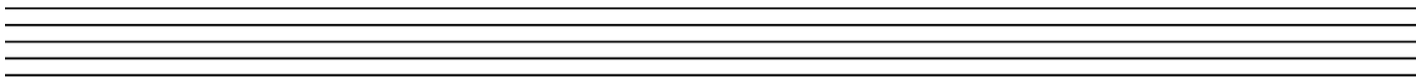
First, write the solfège syllables for each note above the tune. Then re-write it below in the key of B♭ major with solfège syllables (you do not need to write out the lyrics). Include key signature, time signature, and bar lines.



Now write “Liza Jane” in E major, in **bass clef**. Include solfège, time and key signature, and bar lines.



Write the “Ode to Joy” melody in A-flat major, in **treble clef**. Include solfège, time and key signature, and bar lines. Try to do this from memory, beginning with the solfège syllables. If you need to, you can consult the tune by looking at Assignment 4 (on the website if you don’t have your copy).



Write “The Saints” melody in B major, in **bass clef**. Include solfège, time and key signature, and bar lines. Try to do this from memory, beginning with the solfège syllables. If you need to, you can consult the tune by looking at Assignment 4 (on the website if you don’t have your copy).

