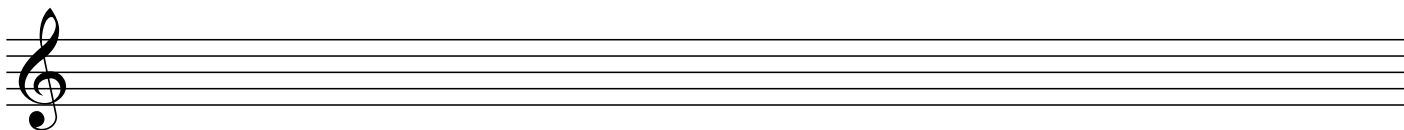


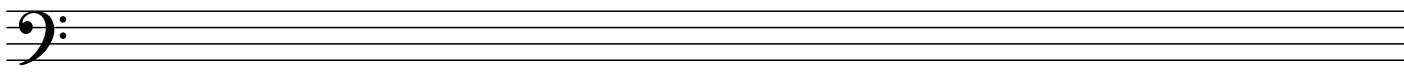
Name: _____

Notation practice, Half Steps, Whole Steps, Accidentals

Clef writing practice Write a lineful of treble clefs

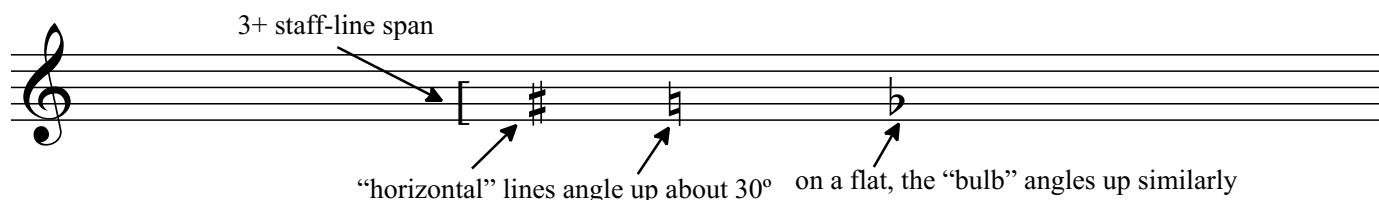


Write a lineful of bass clefs

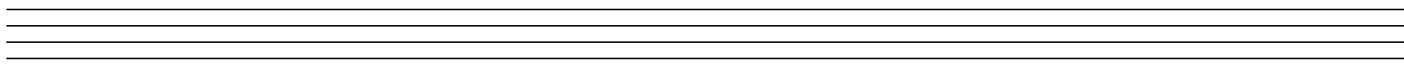


Accidental writing practice Accidentals span about **3 lines or 3 spaces** from top to bottom.

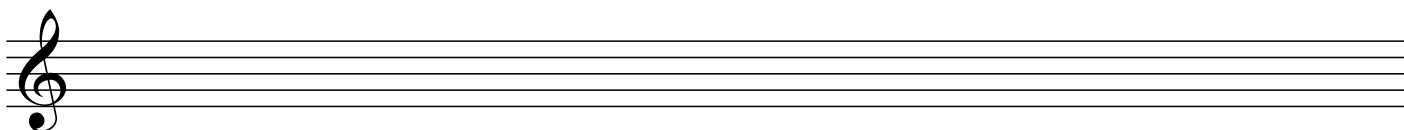
Note that the left-right lines are not exactly horizontal, but angle up about 30° to the right.



Write 8 sharps, 8 flats, and 8 natural signs.

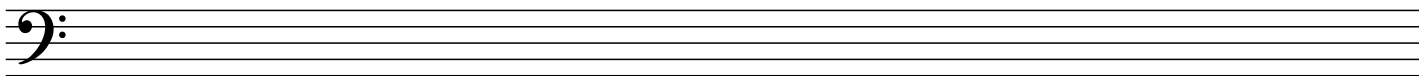


Write the requested notes using **QUARTER notes** in **TREBLE clef**. Use the correct stem direction: stems up for notes below the middle line, stems down for notes on the middle line and higher. Remember: although we say “C-sharp”, “B-flat”, etc., when speaking, in staff notation, the accidental always **precedes** the note head.



C4 B4 D#5 Bb4 G#5 F4 Eb5 B#5 A3 Ab4 A#5 C6

Write the requested notes using **EIGHTH notes** in **BASS clef**. Use the correct stem direction and always draw the eighth note flag to the **right** of the stem, regardless of stem direction.



C4 B3 D3 B \flat 2 G \sharp 2 F \flat 3 E \flat 2 C \sharp 3 B \sharp 3 D \sharp 4 A3 B1

Mnemonic tune for whole and half steps, courtesy of yours truly:

White-note steps are whole ex - cept for C - B and F - E.

Identify the following as half steps (**H**) or whole steps (**W**).

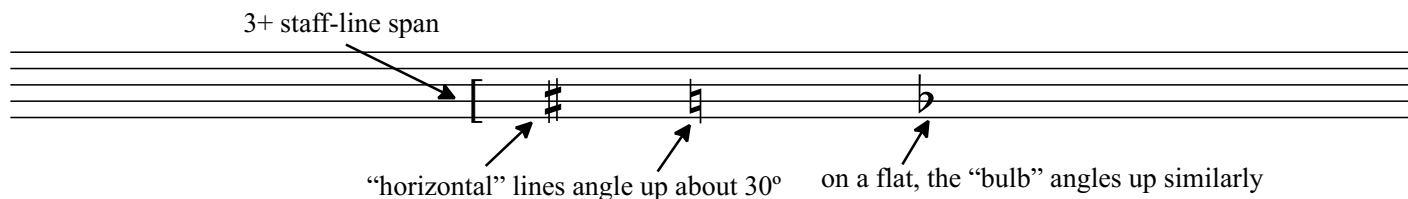
BASS CLEF—be sure to read in **bass clef** for the **whole line**.

Write the indicated interval above or below the starting note. Do not change the starting pitch.

Write neatly, and be sure to **make your accidentals the right size and inclination**.

Be sure to **center** sharps and naturals, and the “bulb” of flats, **precisely** on the line or space of their note.

Reminder: accidentals span about 3 lines or 3 spaces from top to bottom.



Write **quarter notes**.

Stem direction is **up** for notes on the third line and below; **down** for notes on the third space and above.

Write your note in the same staff as the given note. I used a grand staff here just to avoid confusion (misreading) of the intended clef.

example:

WS below	chromatic HS above	WS above	diatonic HS above

WS above	diatonic HS below	diatonic HS below	WS below	diatonic HS above

Complete the following as above, but write **half notes**.

major second below	chromatic minor second above	major second above	chromatic minor second below	major second below