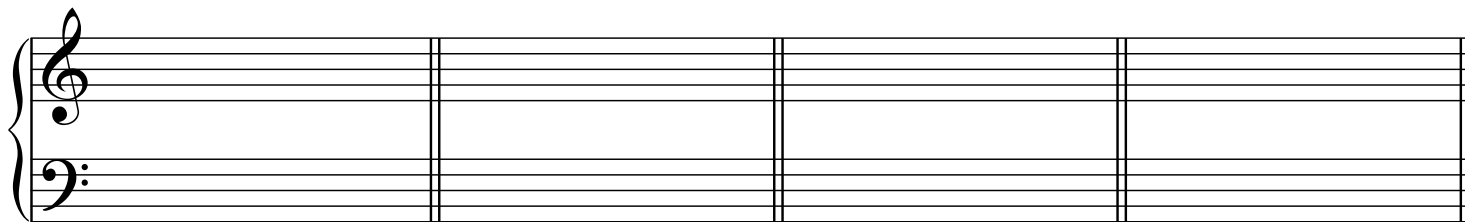


Write the indicated **major** key signature.



E major

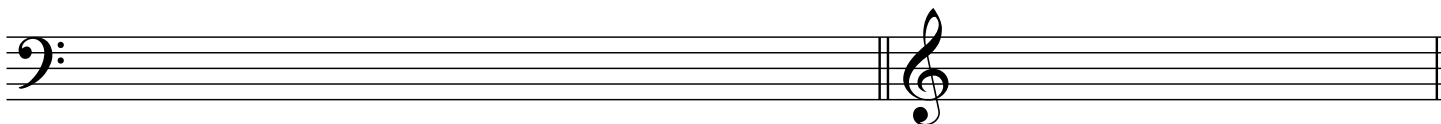
G \flat major

E \flat major

F \sharp major

Write out the following **minor** scales.

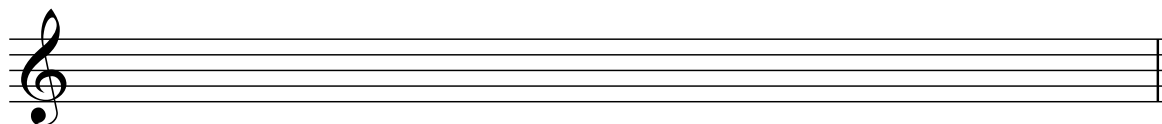
a) For these two, **do not** write key signatures: write individual accidentals as needed.



G melodic minor (ascending and descending) in **bass** clef

F \sharp natural minor

b) For the scale below, **do write the key signature**, and add accidentals only where needed.



C harmonic minor

Write the indicated pitches.



E \flat major: subdominant

A major: mediant

B \flat minor: subtonic

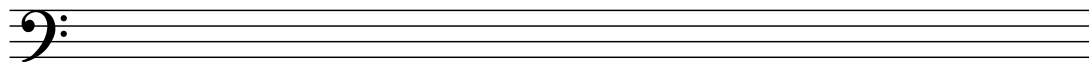
F minor: leading tone

Write the following scales without key signatures, using individual accidentals.



B major pentatonic

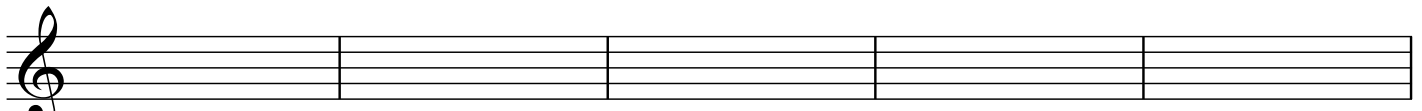
F minor pentatonic



B \flat blues scale (in **bass clef**)



Write the indicated triads.



$E\flat$ major
 $F\sharp$ minor
A augmented
 $C\sharp$ diminished
 $A\flat$ minor

Identify the following triads by **root, quality, and inversion**.



Write the indicated seventh chords.



$E\flat-7$
 $A^7/C\sharp$
 $F\sharp m^7(b5)$
 $D\flat\Delta 7$

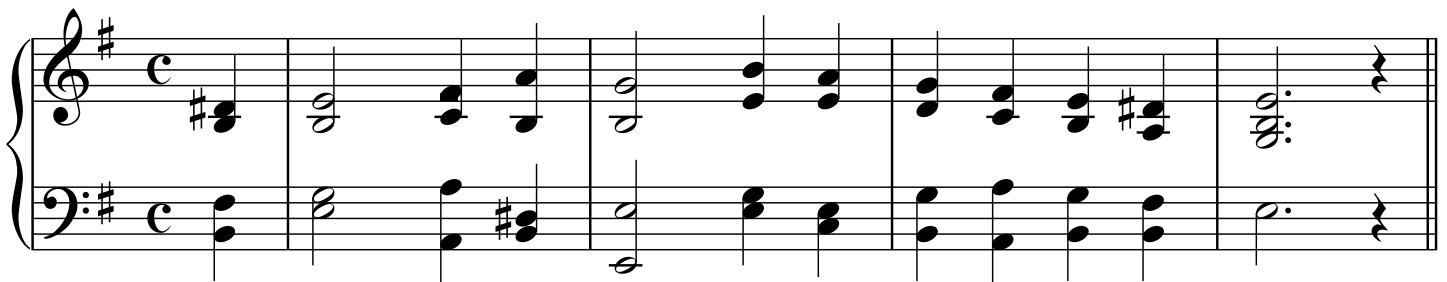
Write the chords indicated by the roman numerals.



D: IV
 $B\flat m: V^7$
 $E\flat: ii^6_3$
 $F\sharp m: vii^o$

Analyze the harmony of the phrase below with roman numerals, in the key of E minor.

Your roman numeral symbols should indicate the **quality** of the chord and the **inversion**, if any.



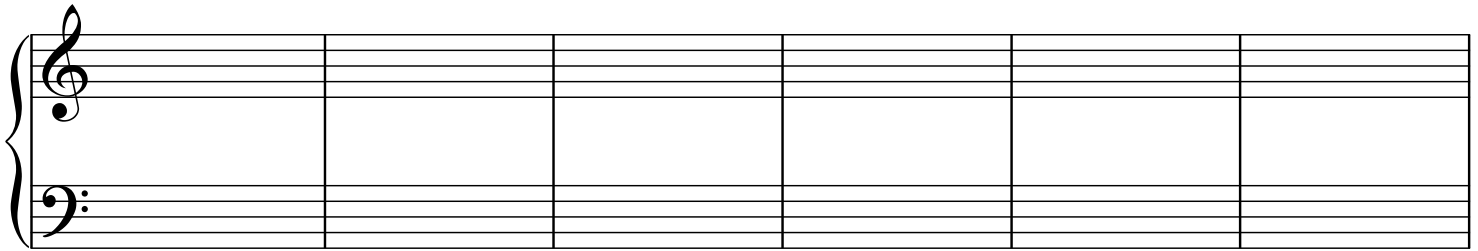
E minor:

Write out the 12-bar blues progression in the key of B \flat . Include a **key signature**.

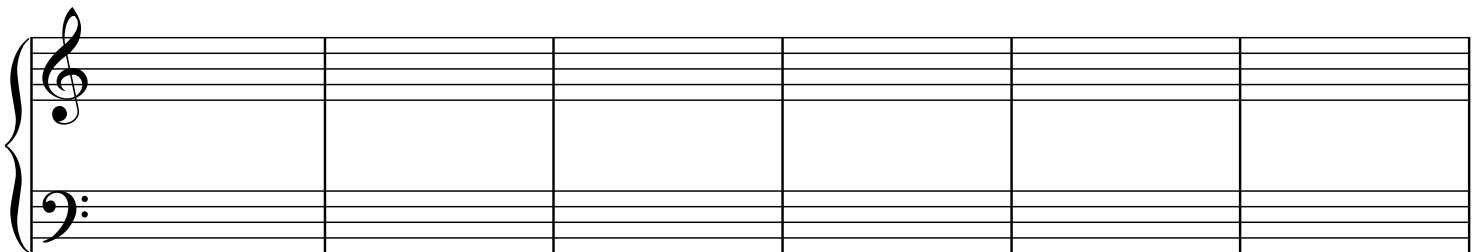
Write the lead-sheet chord symbols above the staff **and** write out the chords in ordinary staff notation.

Put the root and fifth in the LH. Put the 3rd and 7th in the RH and arrange them to result in **close voice leading**.

Use all **necessary** accidentals, and also **courtesy** accidentals wherever the same letter-name pitch changes from one bar to the next.



A grand staff consisting of two staves (treble and bass clefs) with a brace on the left. The staff is divided into six measures by vertical bar lines, intended for writing a 12-bar blues progression.



A grand staff consisting of two staves (treble and bass clefs) with a brace on the left. The staff is divided into six measures by vertical bar lines, intended for writing a 12-bar blues progression.

Each of the last two questions will specify a key, time signature and one of the focus tunes below.

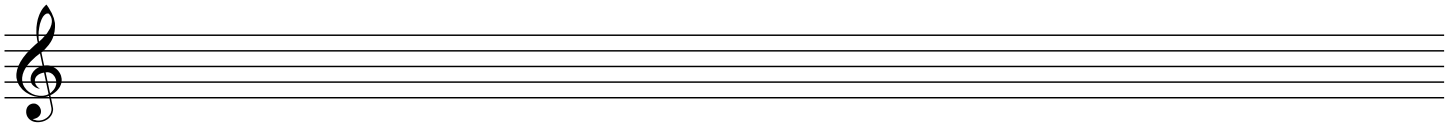
You will have to notate the given tune in the given key.

- Ode To Joy**
- Liza Jane**
- Motherless Child**
- O My Love**
- All The Pretty Little Horses**

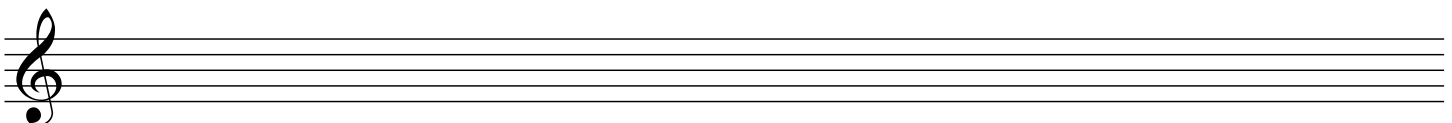
For example:

Write out the melody to “Motherless Child” in the key of F minor, in 4/4.

Include the key signature, time signature, barlines, solfège syllables, and all necessary accidentals.



A single treble clef staff with five lines, intended for writing the melody of “Motherless Child”.



A single treble clef staff with five lines, intended for writing the melody of “Motherless Child”.