

4.5 Exercise: Determining the Size and Quality of Intervals Between Notes of the Major Hexachord Scale

Exercise 4.9

Consider the major seconds and minor seconds used in the major hexachord scale. Complete the following chart using solfège syllables.

| Whole Steps Major 2 | Half Steps Minor 2 |
|------------------------|-----------------------|
| <i>d-r</i> | |

4.6 Exercises: Writing a Major Hexachord Scale and Melodies Using Accidentals

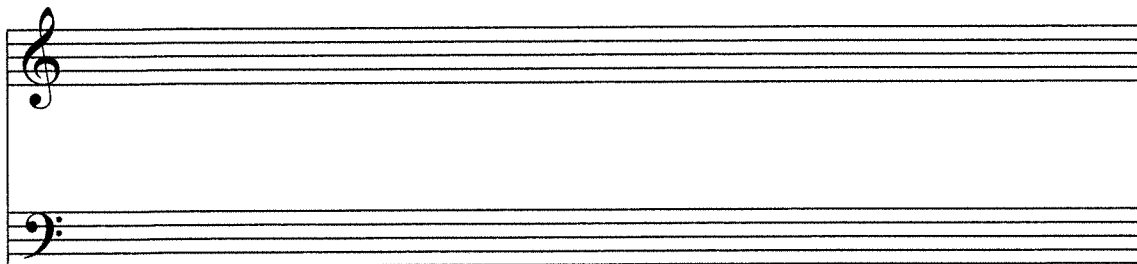
Exercise 4.10

Write the following major hexachord scales in treble and bass clef using whole notes and accidentals ascending and descending. Include the solfège syllables and scale degrees, mark the half steps, and determine the accidentals.

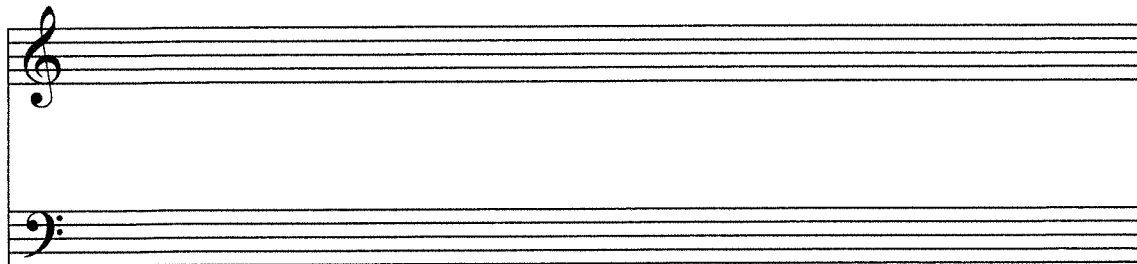
1. G major

2. D major

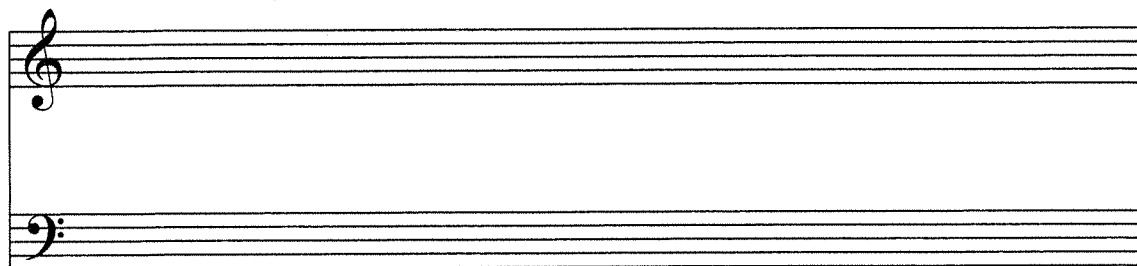
3. A major



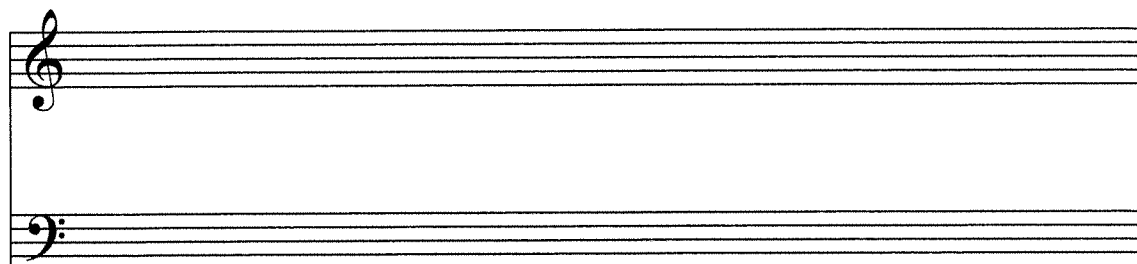
4. E major



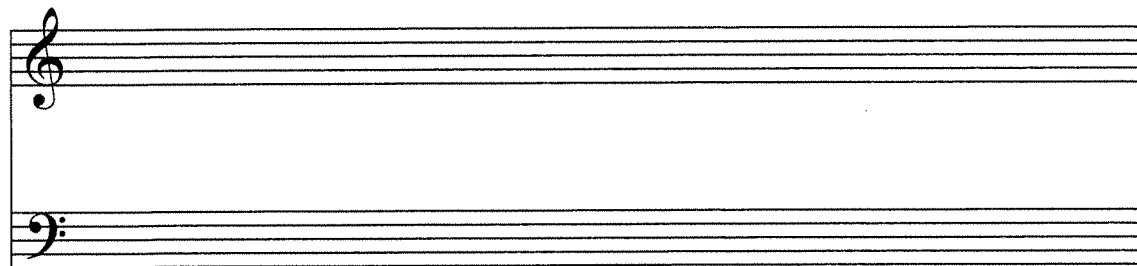
5. B major



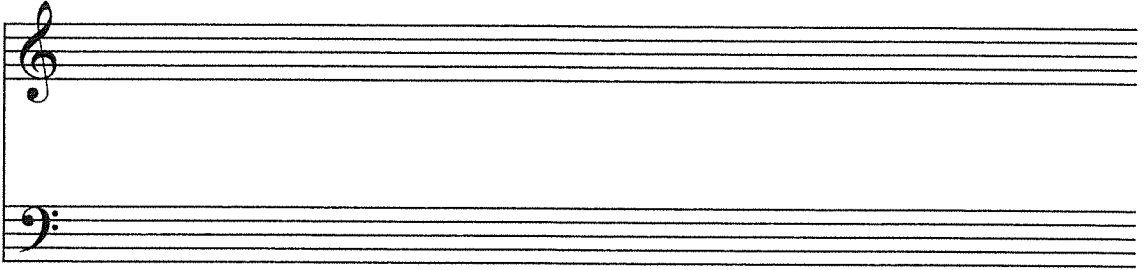
6. Write an F-sharp major hexachord scale in treble and bass clef using whole notes and accidentals.



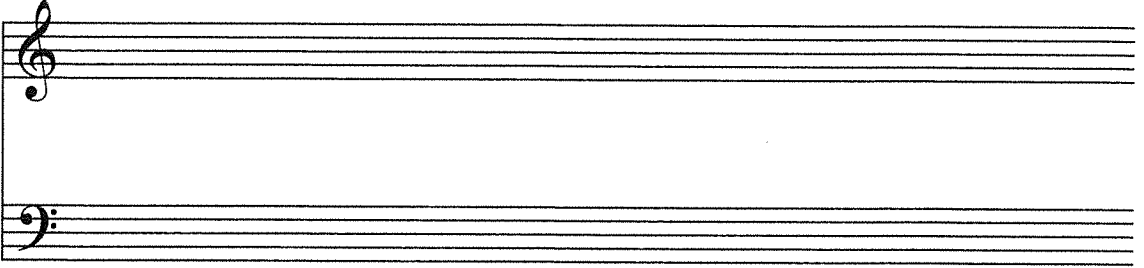
7. F major



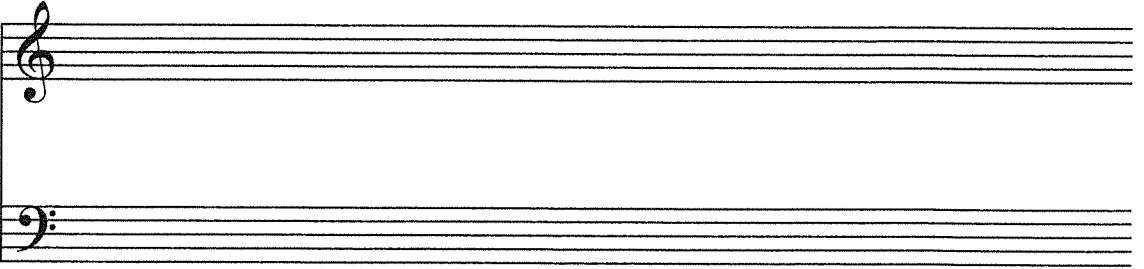
8. B-flat major



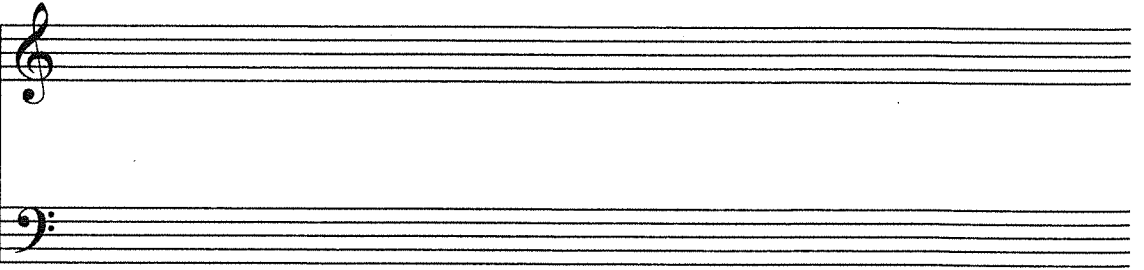
9. E-flat major



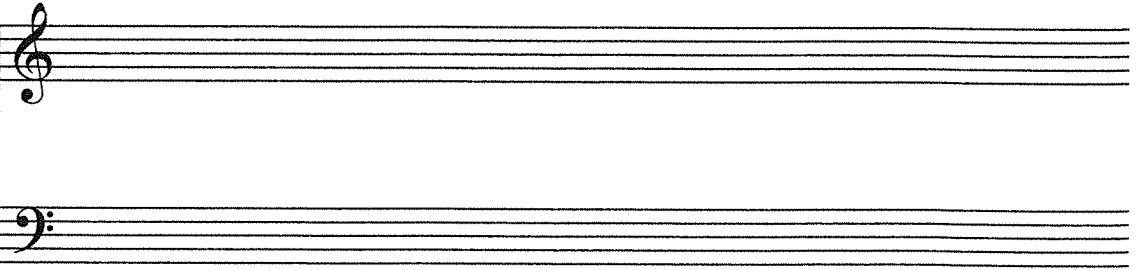
10. A-flat major



11. D-flat major

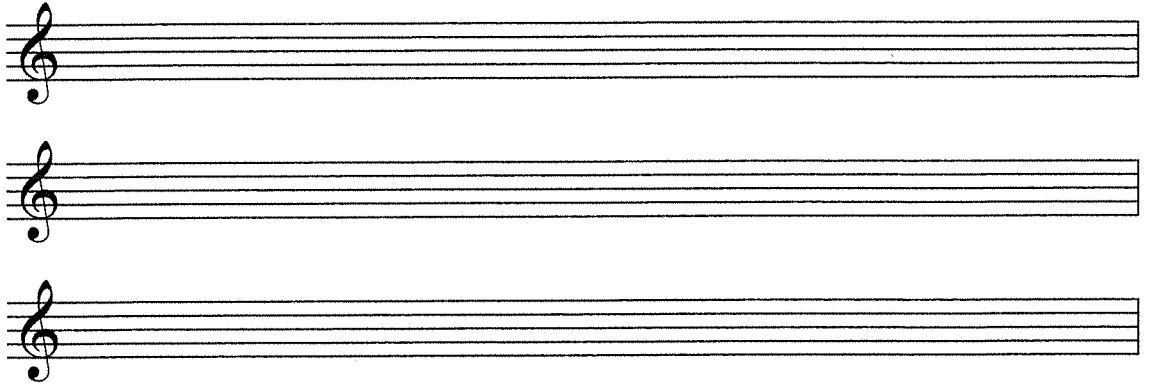


12. G-flat major



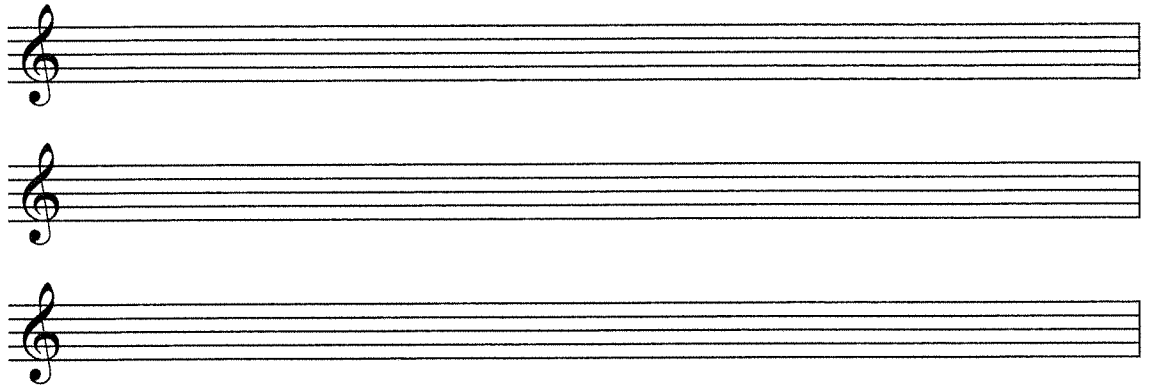
Exercise 4.11

1. Write "Twinkle, Twinkle, Little Star" beginning on B-flat. Include the time signature, bar lines, and accidentals.



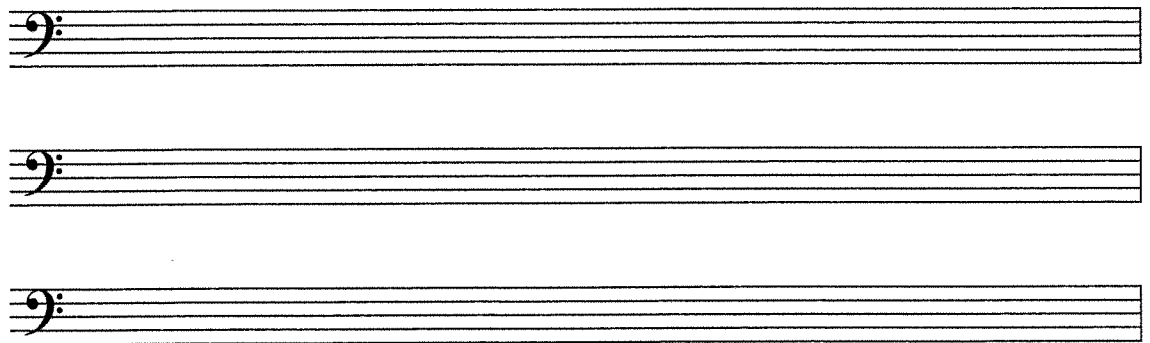
Three blank musical staves, each with a treble clef, provided for writing the first exercise.

2. Write "Twinkle, Twinkle, Little Star" beginning on G. Include the time signature, bar lines, and accidentals.



Three blank musical staves, each with a treble clef, provided for writing the second exercise.

3. Write "Twinkle, Twinkle, Little Star" beginning on F. Include the time signature, bar lines, and accidentals.



Three blank musical staves, each with a bass clef, provided for writing the third exercise.

4. Write "Twinkle, Twinkle, Little Star" beginning on G. Include the time signature, bar lines, and accidentals.

4.7 Exercises: Major Pentatonic Scale and Melodies

Exercise 4.12

Consider the intervals in "Rocky Mountain." Bracket the whole steps and circle the minor-third intervals.

$\frac{2}{4}$ *d d d m* | *d d d m* | *d d d m* | *s* |
l s m d | *l s m d* | *m m r r* | *d* |
d m | *s f* | *m m r d* | *r* |
d m | *s l* | *m m r r* | *d* |

Exercise 4.13

Fill in the following chart for the major pentatonic scale.

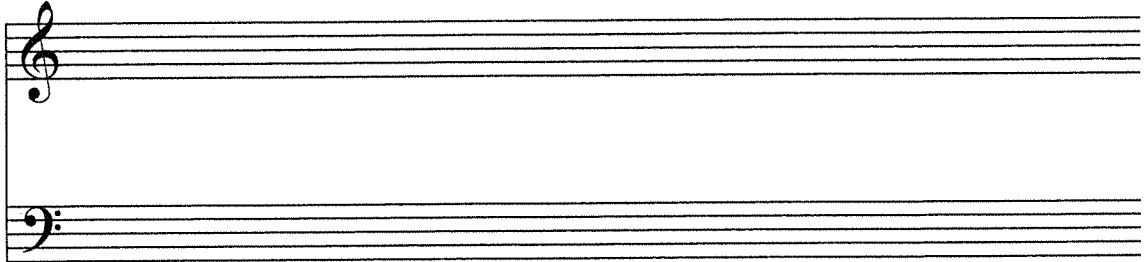
| Solfège Syllable | Scale Degree Number |
|------------------|---------------------|
| <i>d</i> | 1̂ |
| <i>r</i> | |
| <i>m</i> | |
| <i>s</i> | |
| <i>l</i> | |

4.8 Exercises: Writing a Major Pentatonic Scale and Melodies Using Accidentals

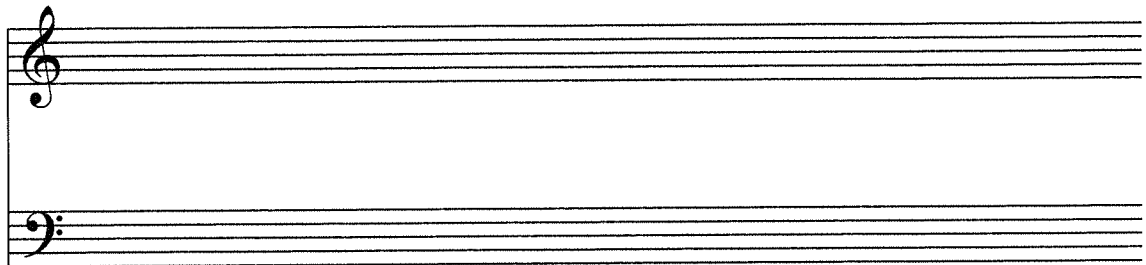
Exercise 4.14

Write the following major pentatonic scales in treble and bass clef using whole notes and accidentals ascending and descending. Include the solfège syllables and scale degrees, and determine the accidentals.

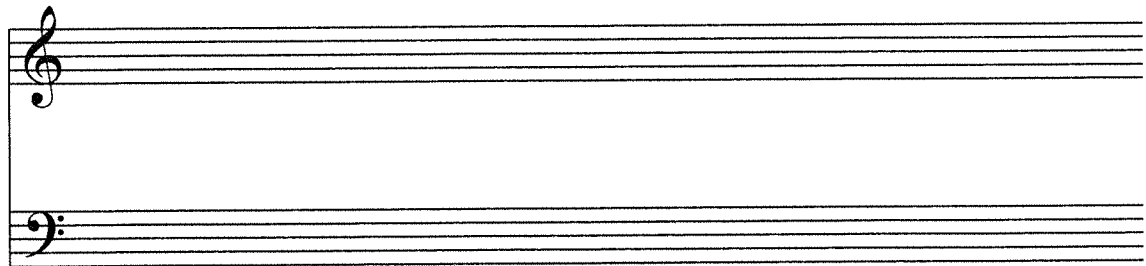
1. G major pentatonic



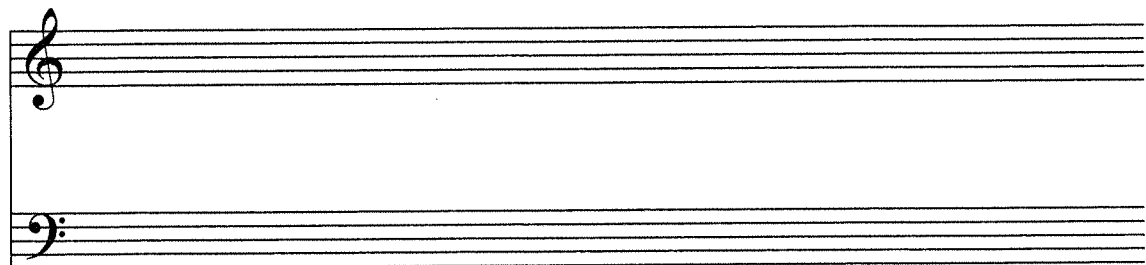
2. D major pentatonic



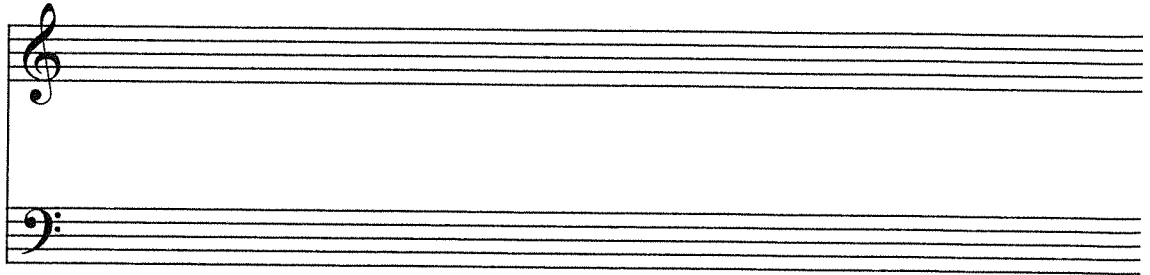
3. E major pentatonic



4. B major pentatonic



5. F-sharp major pentatonic



Exercise 4.15

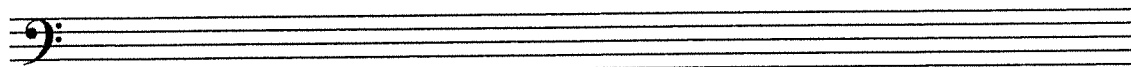
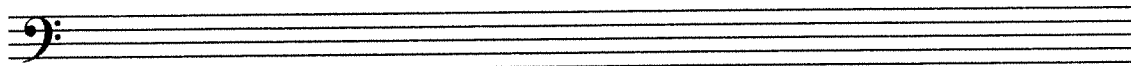
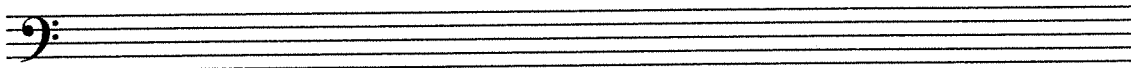
1. Write "Rocky Mountain" beginning on B-flat. Include the time signature, bar lines, and accidentals.



2. Write "Rocky Mountain" beginning on A. Include the time signature, bar lines, and accidentals.



3. Write "Rocky Mountain" beginning on F. Include the time signature, bar lines, and accidentals.



4. Write "Rocky Mountain" beginning on G. Include the time signature, bar lines, and accidentals.

