

MUSIC THEORY EXERCISES

4.1 Exercises: Major Pentachord Scales and Melodies

Exercise 4.1

Circle the half steps and put a bracket around the whole steps in "Hungarian Canon No. 1."

Hungarian Canon No. 1

$\frac{2}{4}$ *d r m f m r m* | *d r m f s s* |
s m s f m r m | *d r m r d d* ||

Exercise 4.2

Fill in the following chart for the major pentachord scale.

Solfège Syllable	Scale Degree Number
<i>d</i>	1̂
<i>r</i>	
<i>m</i>	
<i>f</i>	
<i>s</i>	

4.2 Exercise: Determining the Intervals Between Notes of the Pentachord Scale

Exercise 4.3

Consider the whole steps (M2) and half steps (m2) in the major pentachord scale. Complete the following chart using solfège syllables.

Whole Steps	Half Steps
Major 2	Minor 2
<i>d-r</i>	

4.3 Exercises: Writing a Major Pentachord Scale and Melodies Using Accidentals

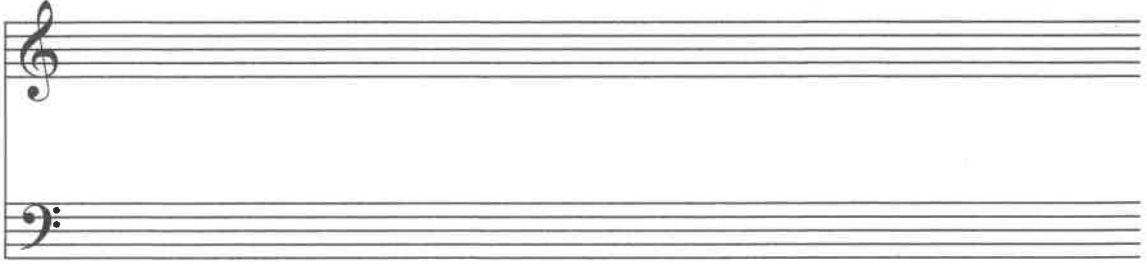
Exercise 4.4

Write each of the following major pentachord scales in treble and bass clef using whole notes and accidentals ascending and descending. Include the solfège syllables and scale degree numbers, mark the half steps, and determine the accidentals.

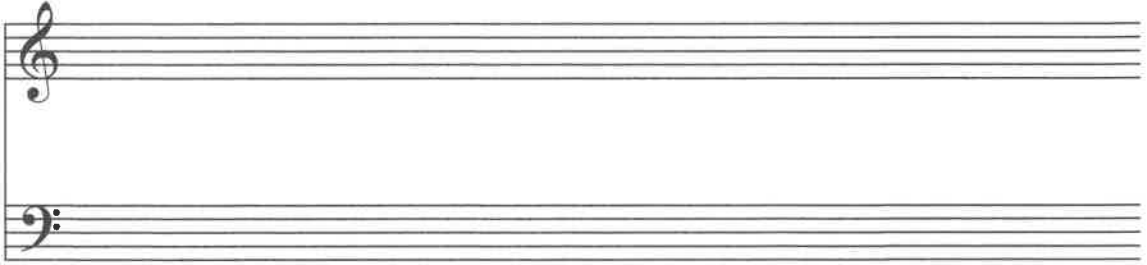
1. G major

2. D major

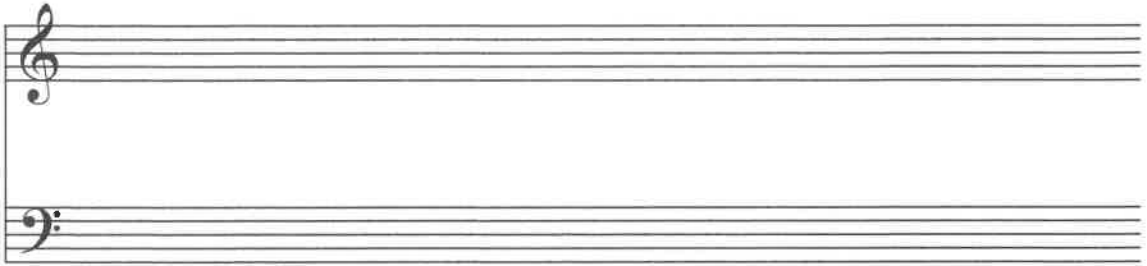
3. A major



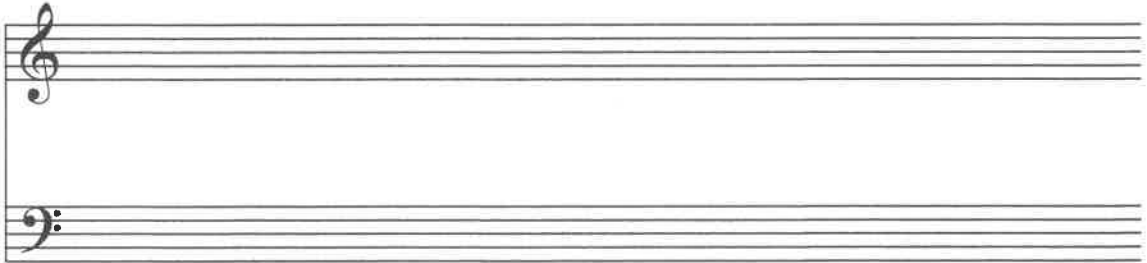
4. E major



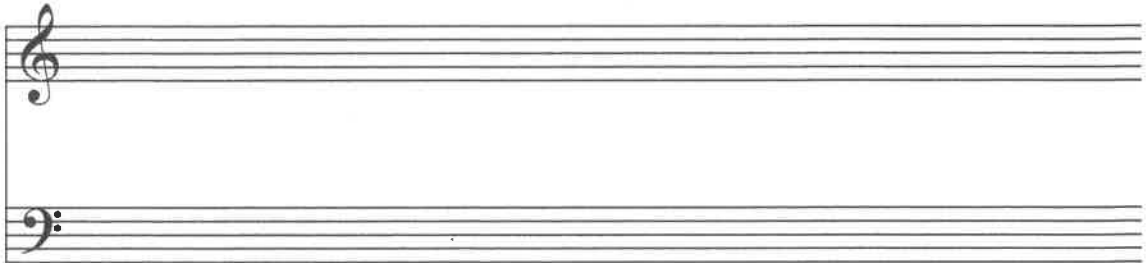
5. B major



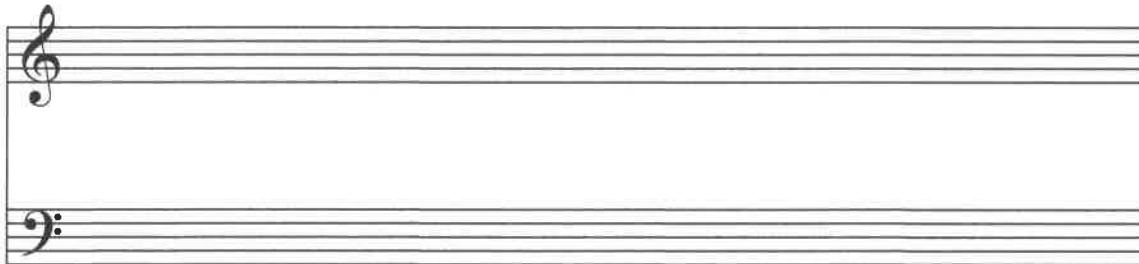
6. F-sharp major



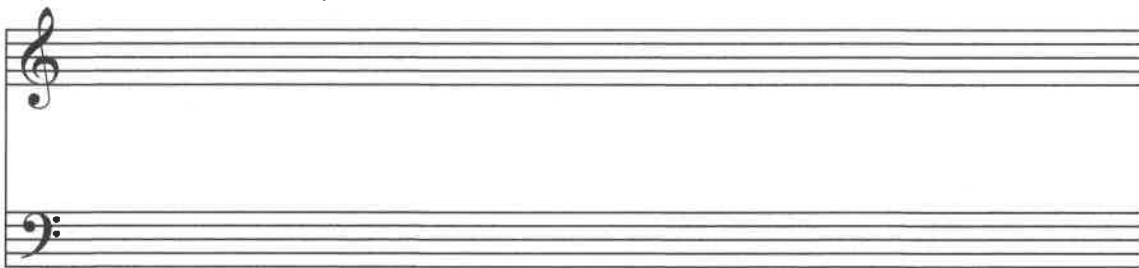
7. C-sharp major



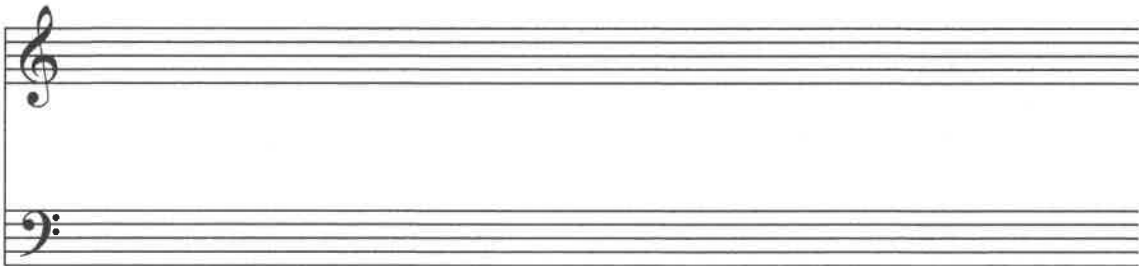
8. F major



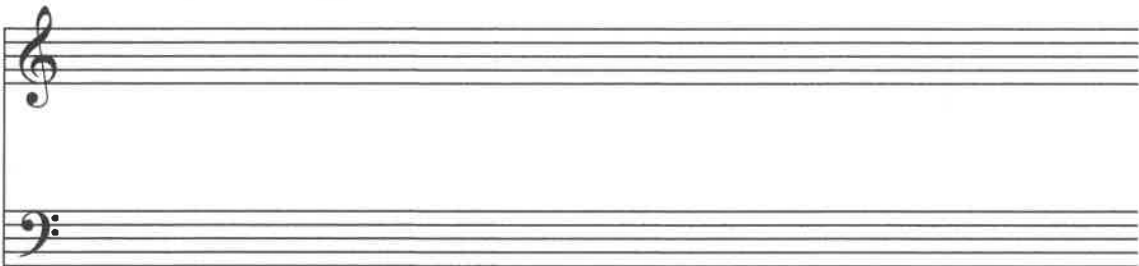
9. B-flat major



10. E-flat major



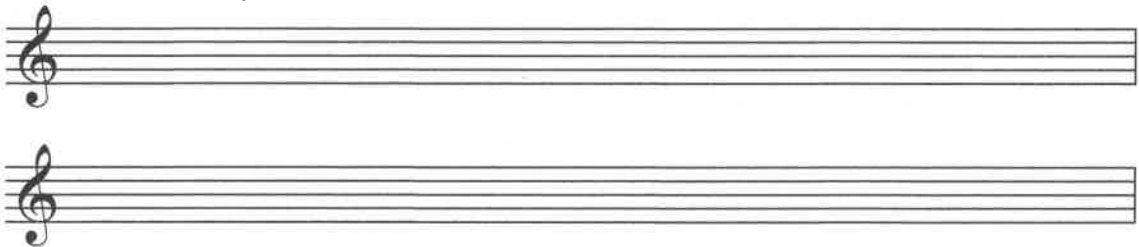
11. A-flat major



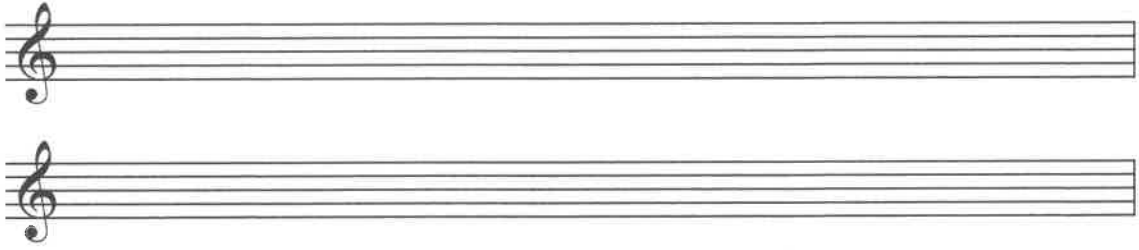
Exercise 4.5

Write "Hungarian Canon No. 1" beginning on the following notes. Include a time signature, bar lines, and accidentals.

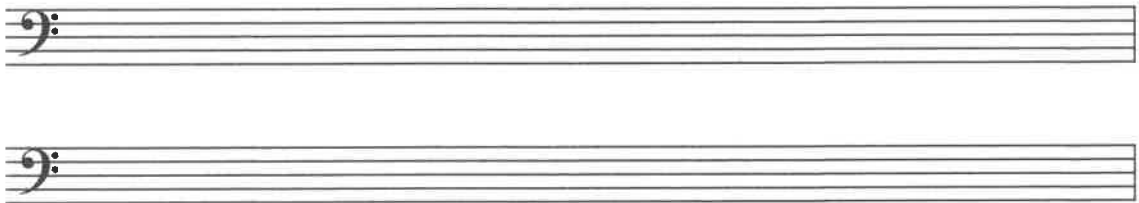
1. Begin on B-flat



2. Begin on D



3. Begin on F



Exercise 4.6

To write a major pentachord melody on the staff for a given tonic note:

1. Determine the scale of the melody.
2. Associate the scale degrees of the tone set with absolute pitch names on the staff.
3. Remember to place an accidental in front of every altered note on the staff.

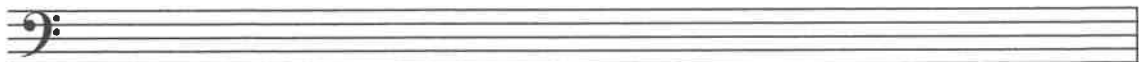
Lady Come



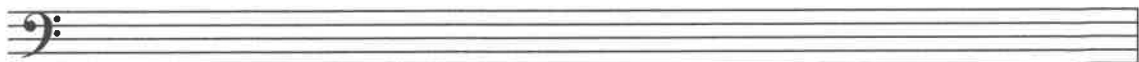
1. Write "Lady Come" beginning on D. Include the time signature, bar lines, and accidentals.



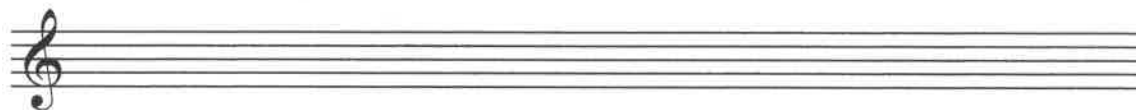
2. Write "Lady Come" beginning on F. Include the time signature, bar lines, and accidentals.



3. Write "Lady Come" beginning on G. Include the time signature, bar lines, and accidentals.



4. Write "Lady Come" beginning on B-flat. Include the time signature, bar lines, and accidentals.



4.4 Exercises: Major Hexachord Scales and Melodies

Exercise 4.7

Circle the half steps (m2) and put a bracket around the whole steps (M2) in "Twinkle, Twinkle, Little Star."

Twinkle, Twinkle, Little Star

2/4

d d s s l l s f f m m r r d

s s f f m m r s s f f m m r

d d s s l l s f f m m r r d

Music Theory Exercise 4.8

Fill in the following chart for the major hexachord scale.

Solfège Syllable	Scale Degree Number
<i>d</i>	1̂
<i>r</i>	
<i>m</i>	
<i>f</i>	
<i>s</i>	
<i>l</i>	