

Name: _____

Half Steps, Whole Steps, Accidentals

Mnemonic tune for whole and half steps, courtesy of yours truly:

WS WS WS WS HS HS

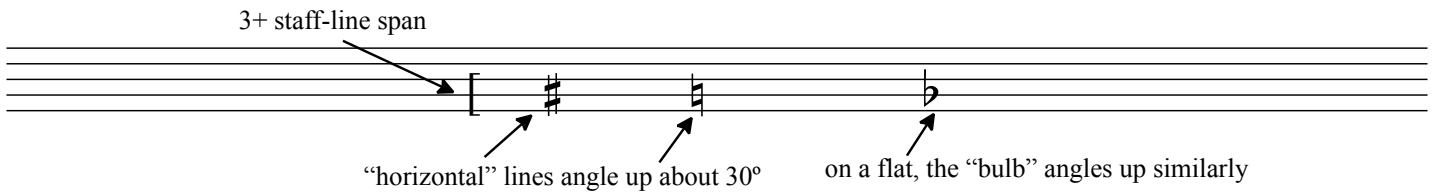
White-note steps are whole ex - cept for C - B and F - E.

Identify the following as half steps (H) or whole steps (W).

BASS CLEF—be sure to read in **bass clef** for the **whole line**.

(continues on reverse)

Write the indicated interval above or below the starting note. Do not change the starting pitch.
 Write neatly, and be sure to **make your accidentals the right size and inclination**.
 Be sure to **center** sharps and naturals, and the “bulb” of flats, **precisely** on the line or space of their note.
 Accidentals span about 3 lines or 3 spaces from top to bottom.



Note that the left-right lines are not exactly horizontal, but angle up about 30° to the right.

Write quarter notes.

Stem direction is **up** for notes on the third line and below; **down** for notes on the third space and above.

example:

Complete the following as above, but write half notes.
