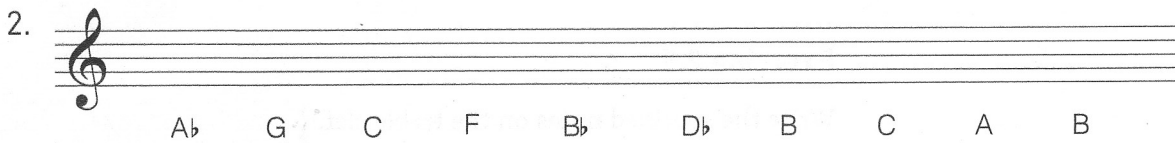
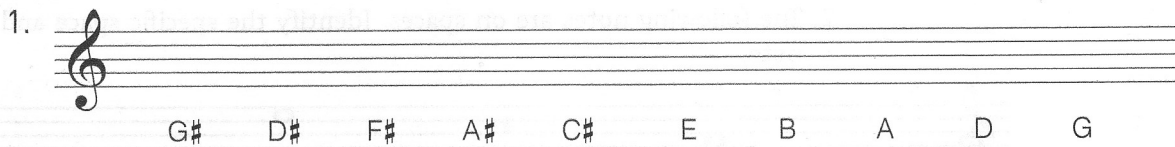


Exercise 2.11

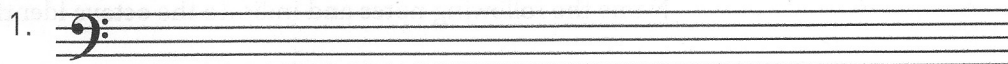
Write the indicated notes on the staff.



2.4 Exercises: Bass Clef, Ledger Lines, and Octave Sign

Exercise 2.12

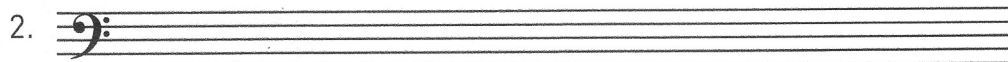
Practice writing a row of bass clefs.



Exercise 2.13

Write the specified notes on the bass clef.

1. Write a half-note G in a space.
2. Write a quarter-note C in a space.
3. Write an eighth-note A on a line.



Exercise 2.14

Identify the following pitches.

1.

2.

3.

4.

5.

6.

Exercise 2.15

Write the indicated note in the bass clef; there are several solutions.

1.

2.

Exercise 2.16

Before each of the following pitches, add the clef that will make the letter name correct.

1. 

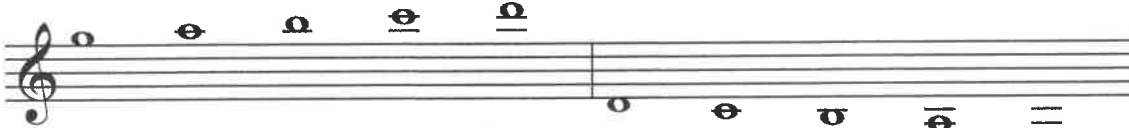
E B C G F B D D


2. 


A G F A E C A G

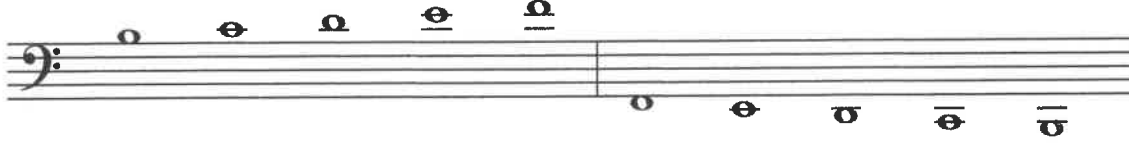
Exercise 2.17


Name the following ledger-line notes in treble and bass clef.


1. 

2. 

3. 

4. 

5. 

6. 

Exercise 2.18

Write the same pitch in a different clef for each note provided.

The image shows two musical staves. The top staff has a treble clef and contains four notes: a whole note on the first line (F4), a whole note on the second line (G4), a whole note on the third space (A4) with a ledger line below it, and a whole note on the fourth space (B4) with a ledger line below it. The bottom staff has a bass clef and contains four notes: a whole note on the first space (F3), a whole note on the second space (G3), a whole note on the third space (A3) with a ledger line below it, and a whole note on the fourth space (B3) with a ledger line below it.