

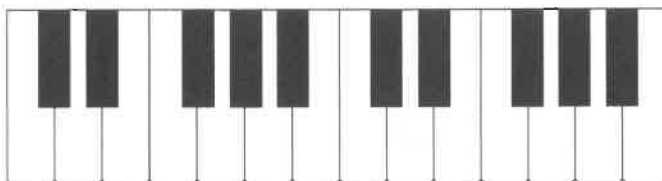
MUSIC THEORY EXERCISES

2.1 Exercises: The Keyboard and Basic Concepts Associated with Pitch

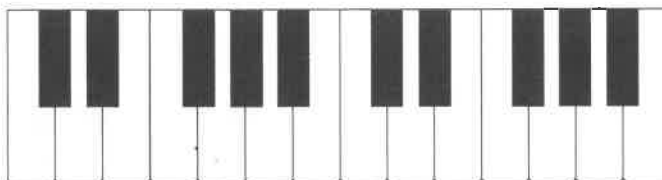
Exercise 2.1

Naming notes on the keyboard.

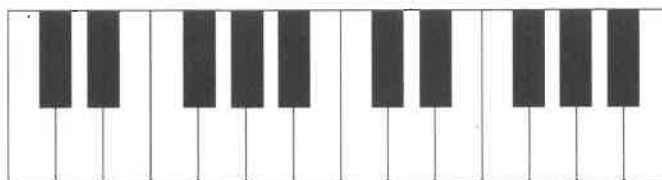
1. Write the letter C on each C key:



2. Write the letter F on each F key:



3. Write the letter E on each E key:



4. Write the letter D on each D key:



5. Write the letter B on each B key:



6. Write the letter G on each G key:



7. Write the letter A on each A key:



Exercise 2.2

Identify the following black keys using sharps.

1. F-sharp



2. C-sharp



3. G-sharp



4. D-sharp



5. A-sharp

**Exercise 2.3**

Identify the following black keys using flats.

1. B-flat



2. D-flat



3. A-flat



4. E-flat



5. G-flat



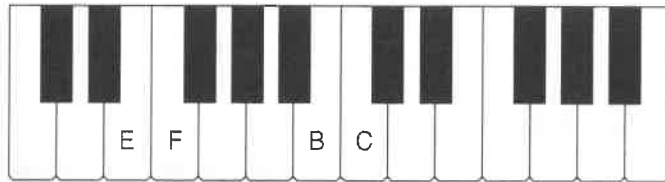
2.2 Exercises: Whole-Step and Half-Step Intervals at the Keyboard

Exercise 2.4

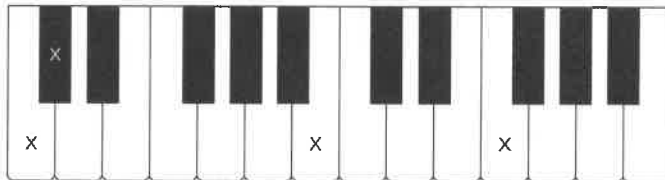
1. A half step is the _____ distance we can measure on the keyboard.
2. How many half steps make up a whole step?
3. The distances between all the white keys on the keyboard are whole steps except for the distances between _____ and _____, and _____ and _____.

Exercise 2.5

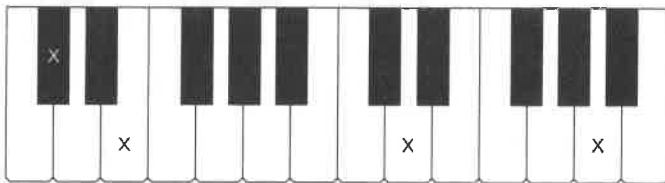
1. Play E-F and B-C on the keyboard.



2. Mark the note that is one half step above each note indicated by an X.

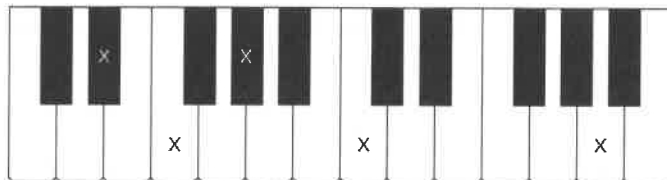


3. Mark the note that is one half step below the indicated note.



Exercise 2.6

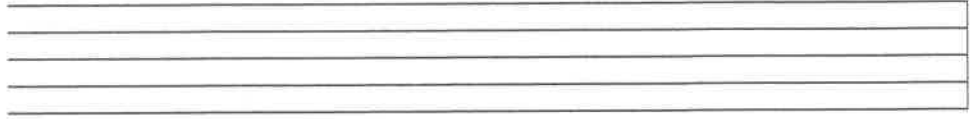
Mark the note that is one whole step above the indicated note.



2.3 Exercises: Treble Clef and Introduction to the Notation of Pitch

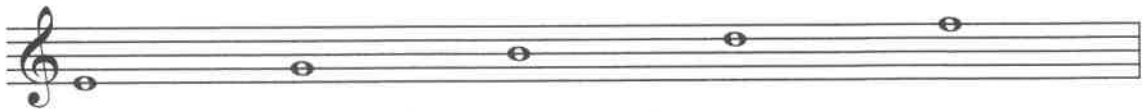
Exercise 2.7

Practice drawing a treble clef on the staff provided below.

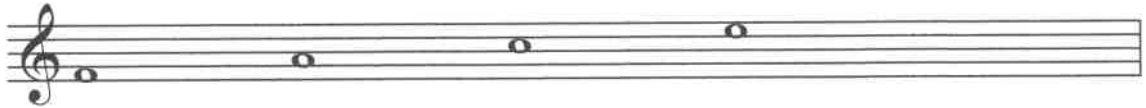


Exercise 2.8

1. Identify the specific line and name the note.



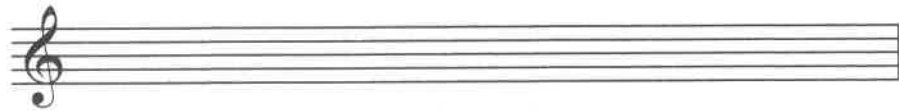
2. The following notes are on spaces. Identify the specific space and name the note.



Exercise 2.9

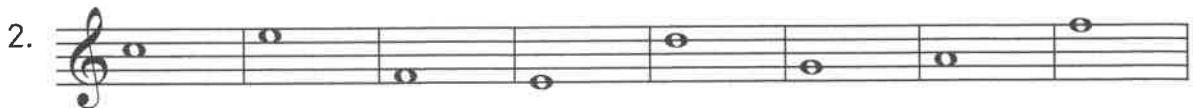
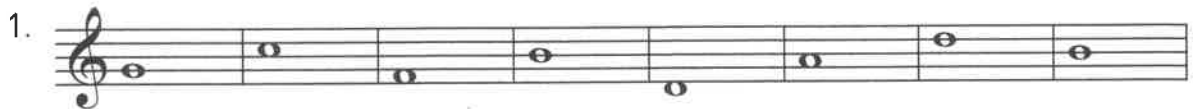
Write the specified notes on the treble clef.

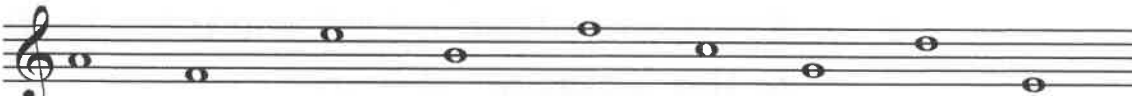
1. Write a quarter-note F on a line.
2. Write an eighth-note E in a space.
3. Write a half-note B on a line.

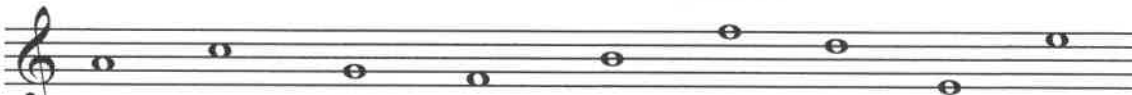



Exercise 2.10

Name the following notes and indicate the octave identification number.



3. 

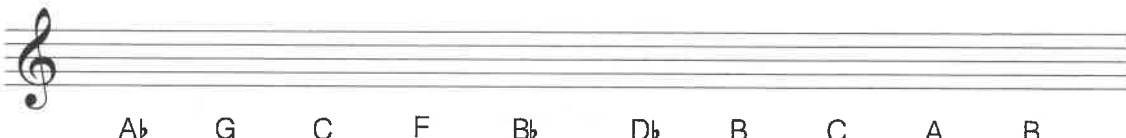
4. 

5. 

Exercise 2.11

Write the indicated notes on the staff.

1. 

2. 

2.4 Exercises: Bass Clef, Ledger Lines, and Octave Sign

Exercise 2.12

Practice writing a row of bass clefs.

1. 

Exercise 2.13

Write the specified notes on the bass clef.

1. Write a half-note G in a space.
2. Write a quarter-note C in a space.
3. Write an eighth-note A on a line.

2. 